



Jakarta
a city of collaboration

JAKARTA CLIMATE ACTION INITIATIVE

Erni Pelita Fitrattunnisa
Environmental Agency
of DKI Jakarta Province

IGES
11th High Level Seminar on Sustainable Cities
September, 29th 2020



MONAS
JAKARTA



CONTENTS

01

Profile of Jakarta

02

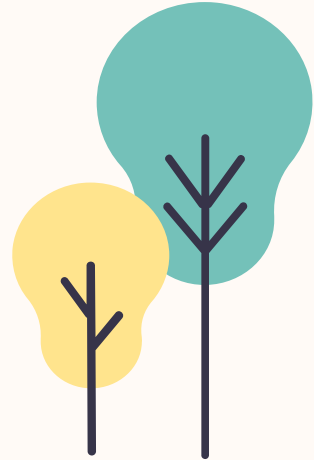
Jakarta Facts On
Climate Change

03

Commitment

04

Jakarta Control on
Climate Change



JAKARTA PROFILE



AREA & CLIMATE

Land 662.33 km²

Sea 6,997.50 km²

Climate :

wet and dry with 13 rivers

DEMOGRAPHIC

Population 10,467,630

Population Growth : 1.09% per year

GDP : US\$ 183 B in 2018

Economic trends: Approx 6.17% per year

Major industries: trade sector (16.64%) in 2017

Administrative :

5 Municipalities + 1 Administrative Regency ,
44 Districts & 267 Village

DKI. JAKARTA



JAKARTA FACTS

on CLIMATE CHANGE

Jakarta Flood, 1 January 2020



Air Pollution, 2019



Drought in Tanah Abang, August 2018

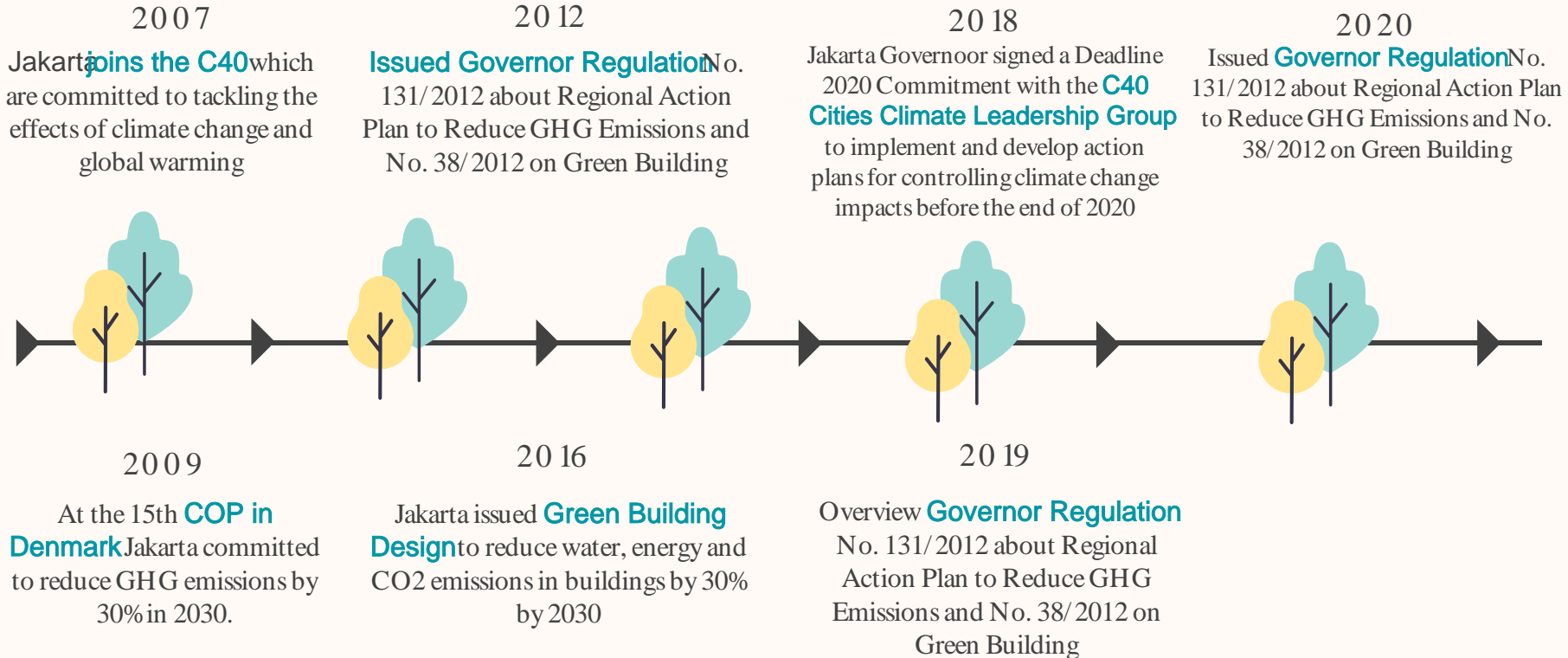


North Jakarta Sea Level Rise, 2018





JAKARTA PROVINCIAL GOVERNMENT COMMITMENTS





REGULATION and POLICY



SPATIAL PLAN
Jakarta Provincial
Regulation No. 1 of
2012, 2030 Regional
Spatial Plan



RPJMD
Jakarta Provincial
Regulation No.
1/2018, the 2017-
2022 RPJMD



RAD GRK
Governor Jakarta
Province No. 131 of
2012, Regional
Action Plans for
Reducing GHG
Emissions



PROKLIM
Jakarta Governor
Instruction No. 127 of
2017, Development and
Assistance for the 2017
Village Climate Program
Location

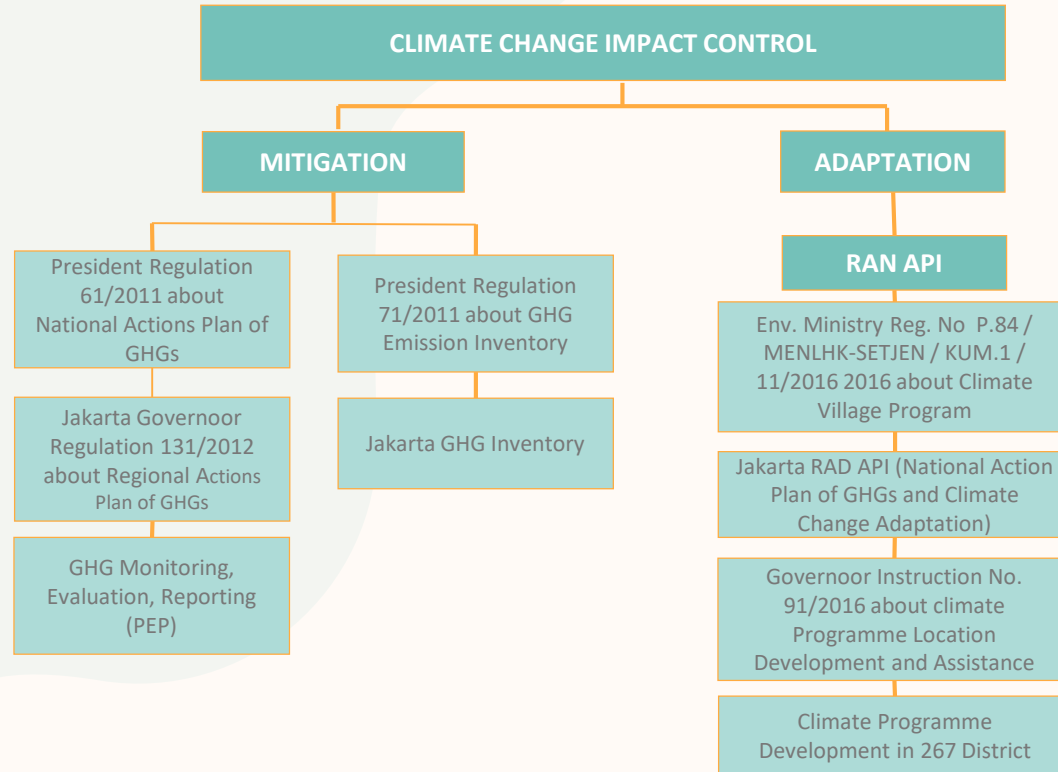


**SECURE
PURCHASE**
Governor's Decree No. 1107 of
2019, Regional Strategic
Activities for Climate Disaster
Mitigation and Adaptation

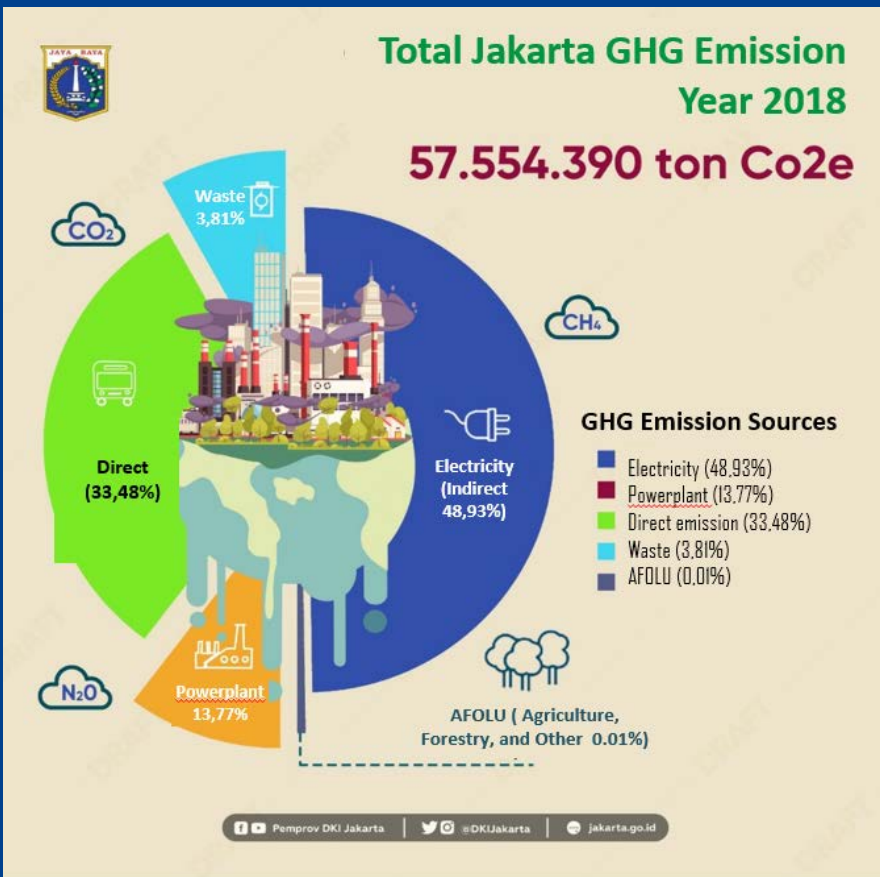


JAKARTA CONTROL

On CLIMATE CHANGE



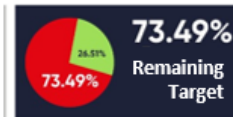
GHG emission sources in Jakarta



Mitigation Actions in Jakarta

GHG EMISSION REDUCTION 2018

35 Million tons CO2e
GHG Emission Reduction 2030 Target



9 Million tons CO2
GHG Emission Reduction 2018 Achievement

Action

ENERGY SECTORS

82.75% Energy efficiency on Electricity Generation	4.91% Biofuel	4.16% Busway	1.45% Intelligent Transport System (ITS)	2.66% Train
--	-------------------------	------------------------	--	-----------------------

2.58% Busway Feeder	0.56% Public Street Lighting	0.51% Gas	0.27% Non Government Building energy efficiency	0.13% Government Building energy conservation	0.01% Powerplant Ownuse and Losses
-------------------------------	--	---------------------	---	---	--

WASTE SECTORS

74.96% Reduce, Reuse, Recycle (3R)	18.14% Integrated Final Disposal Landfill	6.04% Onsite Liquid Waste Treatment	0.86% Offsite Liquid Waste Treatment
--	---	---	--

AFOLU SECTORS

0.47 ton Co2e
Tree Planting

Let's Collaborate to reduce GHG Emission



GHG EMISSION REDUCTION of JAKARTA 2015-2018

Aksi Mitigasi		Tahun				Target Penurunan pada 2030
		2015	2016	2017	2018	
1	Bus Rapid Transit	159.033	170.831	167.219	385.624	309.917
2	Feeder Busway	11.923	56.938	79.653	238.923	367.306
3	ATCS	-	-	81.494	134.356	65.848
4	Public Street Lighting - Saving Energy Lamp	19.895	27.698	43.266	51.652	67.110
5	BBG use for public transportation, government operational vehicle and private	-	-	43.796	47.250	352
6	Energy Efficiency in Government Building	-	9.519	3.098	12.401	129.458
7	Green Building	13.789	14.092	24.895	25.388	5.522.972
8	Electric Train	241.059	148.107	230.533	246.779	171.300
9	Biofuel	124.424	261.684	234.192	455.729	4.145.200
10	Solar Cell in Kepulauan Seribu	60	59	-	-	Non-RAD
11	Solar Cell in Government Building'	88	85	286	-	Non-RAD
12	Public Street Lighting - Solar Cell	10	111	-	-	Non-RAD
13	Low Carbon Fuel Switch in Commercial Building	21.504	19.262	6.346	-	Non-RAD
14	Gas Engine in Commercial Building	21.504	19.262	6.346	-	Non-RAD
15	Reduction of Own-Use and Losses of Power Plant	79	59	718	1.148	Non-RAD
16	Improvement of Power Plant Efficiency	8.546.443	7.559.125	7.134.477	7.673.823	Non-RAD
17	Bike Use as Substitution of Motorcycle use	14	14	19	19	Non-RAD
18	LFG Recovery	73.944	48.195	18.841	12.463	838.937
19	Composting	23.586	25.559	27.921	19.844	
20	3R	20.957	25.067	28.806	31.647	138.174
21	Sludge Processing Plant in Duri Kosambi					
22	Sludge Processing Plant in Pulo Gebang	-	606	590	590	150.766
23	Waste Water Treatment in Setiabudi	423	1.849	2.957	4.146	214.306
24	Planting	-0,693	-0,596	-2,684	-0,475	653,577
TOTAL		9.278.734	8.388.121	8.135.450	9.341.782	35.240.080

7 INITIATIVES of air quality improvement that support GHG emission reduction



Expansion and cleaner public transport – BRT electrification



Expansion of non-motorized transport infrastructure



Tighten industrial and vehicle emissions control, fleet age limitations



Expansion of open green space with climate adaptation features esp water management



Deployment of renewable energy through solar PV installation



Low emission zones

ENERGY SECTOR MITIGATION ACTION

Public Street Lighting with Energy Saving Lamps



Green Buildingon BCA Tower and Sampoerna Strategic Square Building

Methane Capture in theBantar Gebang integrated landfill



Busway (Trans Jakarta)

GREEN AREA SPACE SECTOR MITIGATION ACTION



LONG TERM STRATEGY

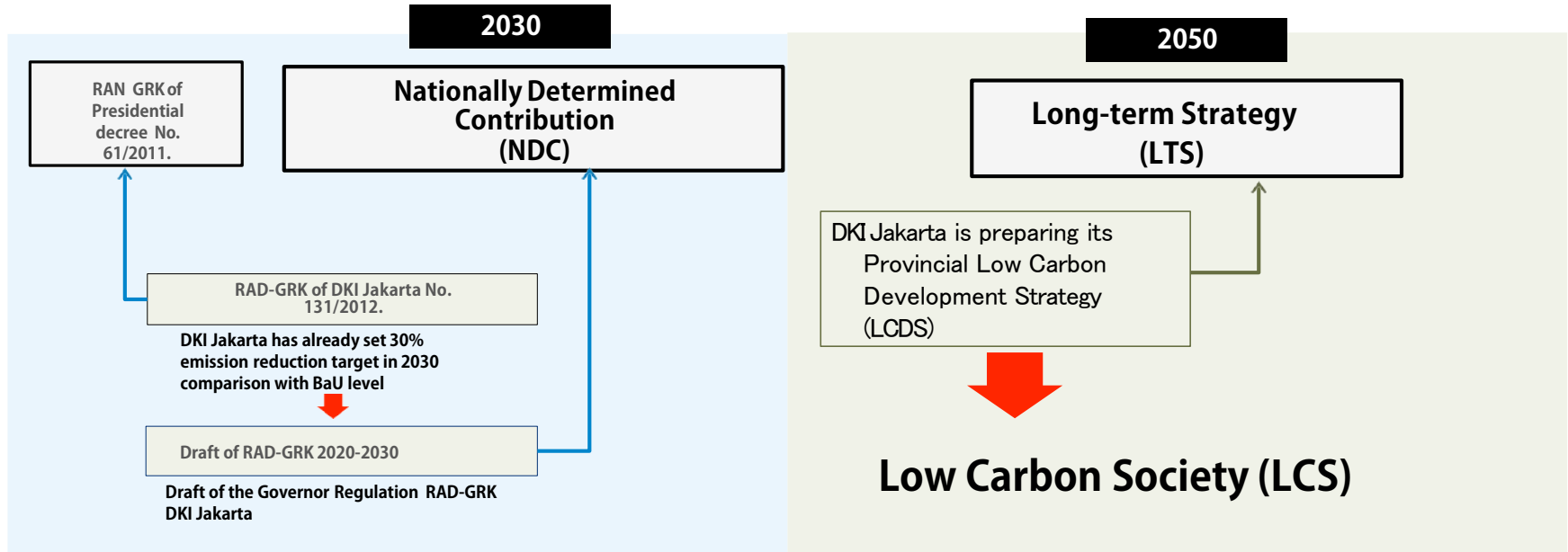
To Achieve DKI Jakarta's
Low Carbon Society
2050



This study is supported by:

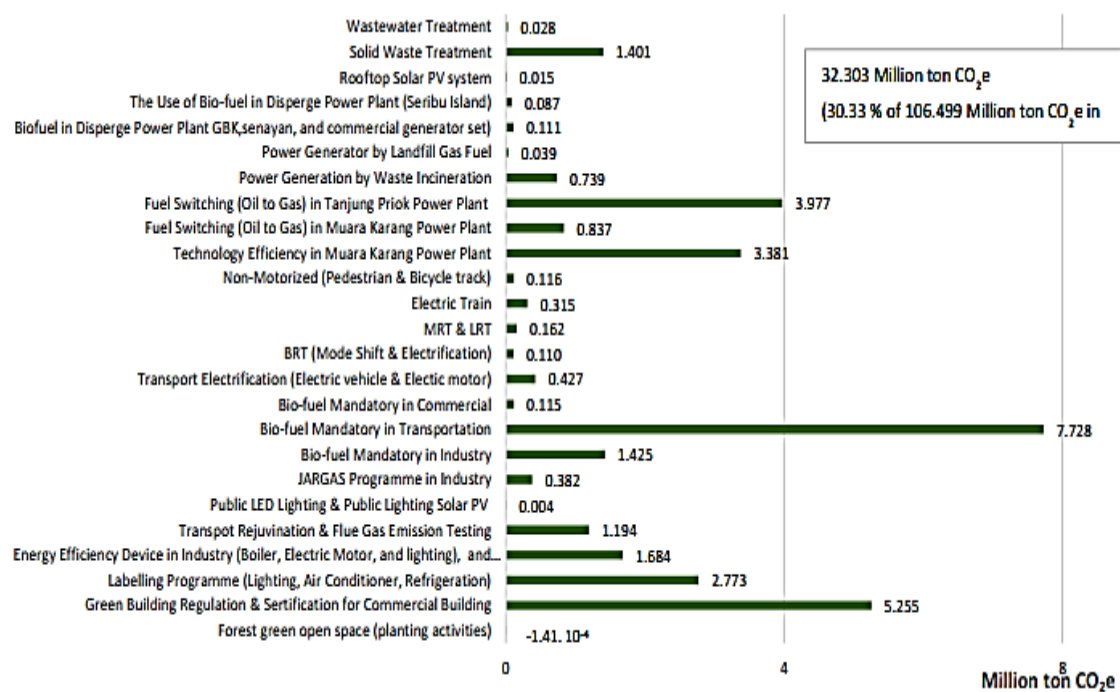


GHGs Emission Reduction Target



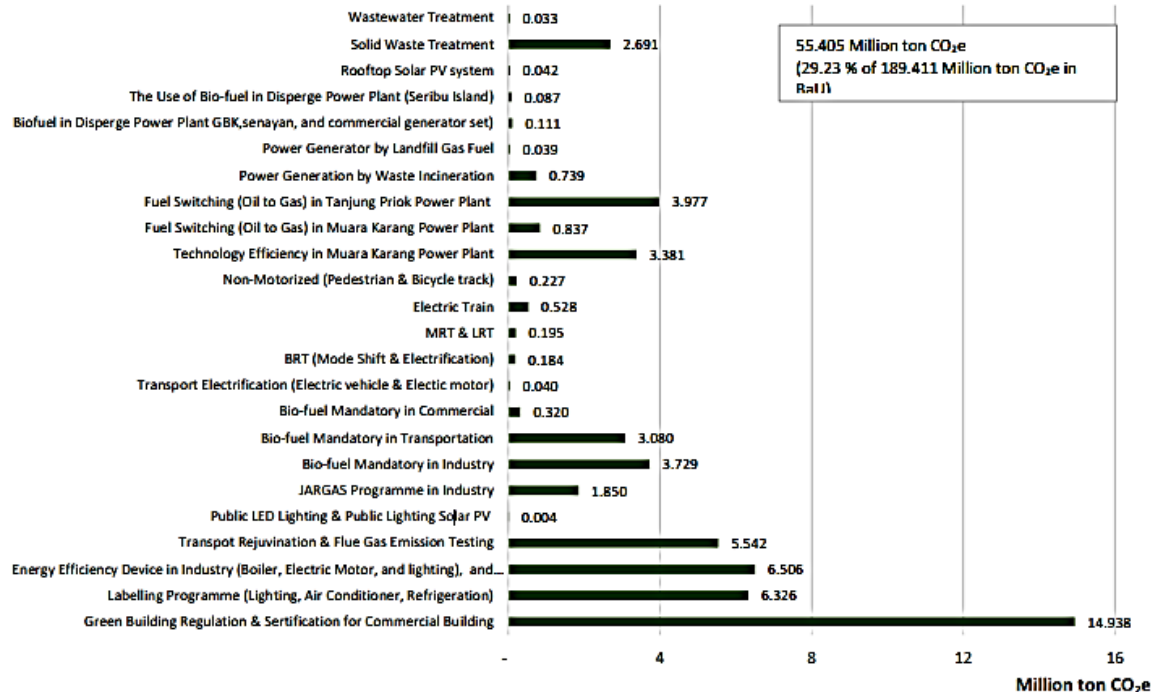
Breakdown of GHGs Emission Reduction Target

2030



Breakdown of GHGs Emission Reduction Target

2050



ADAPTATION PROGRAM



#1
PROKLIM
Village
Climate
Program
Activities



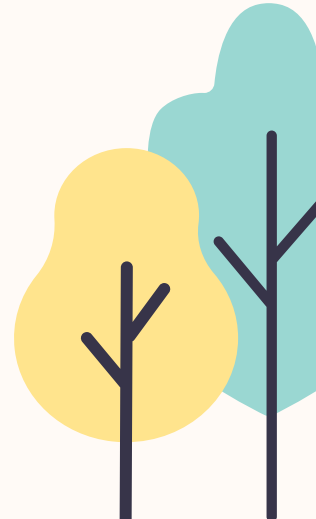
#2
ADIWIYATA
Green School
through
Adiwiyata
Competition



#3
WASTE
BANK
Waste Bank
Movement



#4
SAMTAMA
Waste as our
Responsibility
programme



PROKLIM (VILLAGE CLIMATE PROGRAM) ACTIVITIES

Programs that provide **recognition of the active participation of communities** that have implemented integrated climate change mitigation and adaptation efforts, so that they can support national GHG emission reduction targets and increase community resilience to the impacts of climate change.

In August, 2019 DKI Jakarta already has 83 Village Climate Program Activities.



ADIWIYATA SCHOOL



- Schools that have implemented systems to make school residents **responsible for environmental** protection and management efforts.
- Adiwiyata schools **target formal education at elementary, junior high, high school** or equivalent level. Schools become the target of implementation because the school contributes in shaping the values of life, including values for caring and cultured environment.
- In DKI Jakarta Province there are **365 Adiwiyata Schools** (data 2018) with categories:
 - Adiwiyata Mandiri = 12 schools
 - National = 39 schools
 - Province = 44 Schools
 - City / district = 218 Schools



WASTE BANK

CITIZENS

Intended for **citizens** in an environment that is **aware of cleanliness**

ORGANIC WASTE

Collecting as much **anorganic waste** as possible to sell again to Collectors (Danone / Aqua)

MONEY

Waste which has been sorted out and weighed will be exchanged into **savings deposit (money)**

on line



SAMTAMA (WASTE OF SHARED RESPONSIBILITY)



1

SAMTAMA is the movement to get the community to take action to live well by reducing and processing waste directly from the source.

2

SAMTAMA has more than 500 volunteers from 22 RWs. Launched by the Governor of DKI Jakarta Province on August 24, 2019.

3

SAMTAMA activities are divided into two activities, SAMTAMA Journey and SAMTAMA Village.

4

SAMTAMA Village: initiative from residents at the RW level to improve waste management in the village. SAMTAMA village itself has recruited 330 volunteers from 22 RWs.

5

SAMTAMA's Journey: a society that cares about waste, which is followed by a variety of professions ranging from housewives, students, private employees, teachers, artists, DKI Jakarta Provincial Government employees, and the environmental community.



THANK YOU

Erni Pelita Fitrattunnisa
www.lingkunganhidup.jakarta.go.id

